

CRE



19 Tunstall Avenue KINGSFORD NSW

3 1 1

Set high and proud on an impressive 750sqm parcel of land, this gracious 1920's home enjoys a prized setting on one of Kingsford's premier streets. Positioned opposite the Australian Golf Course and extending to beautiful established park-like gardens, it's graced with classic original features and offers two separate living areas. A rare & surprisingly affordable opportunity, with potential to further extend or add a level (STCA).

Land Size : 750 sqm
View : <https://www.coogeerealestate.com.au/sale/nsw/eastern-suburbs/kingsford/residential/home/5902867>

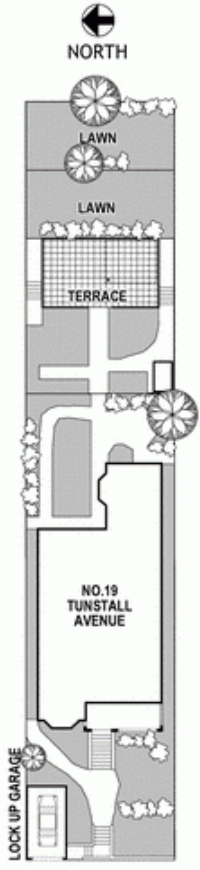
Features Include

- > Private elevated setting, deep foregarden
- > Three bedrooms and bay fronted master, lock up garage
- > Tessellated tile verandah with sweeping views to Botany Bay
- > Grand formal rooms, gas kitchen & pantry
- > Family living with wet bar opens to the idyllic deep gardens

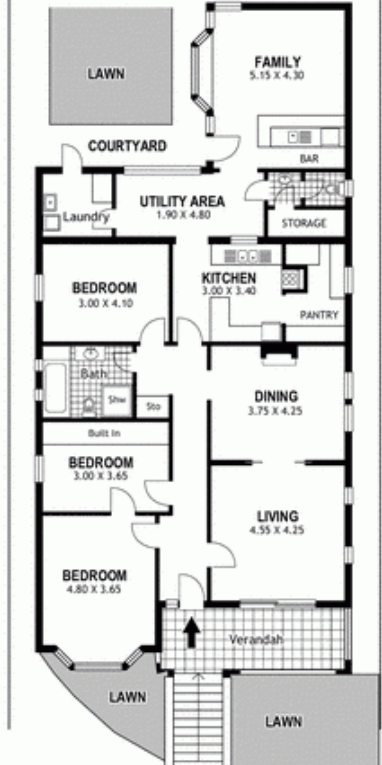


James Giltinan
02 9665 3341

© Dimensions shown on plans are approximate. Plans 1:1, 1:2, 1:4
Illustration by Architectural Perspectives Pty Ltd (1999)



Site Plan



Main House

**19 Tunstall Avenue
KINGSFORD**

Plans shown are for presentation purposes and are not part of any legal document or title and are subject to errors, omissions, inaccuracies and should not be used as sole and accurate reference. Interested parties should make their own enquiries using other sources supplied.