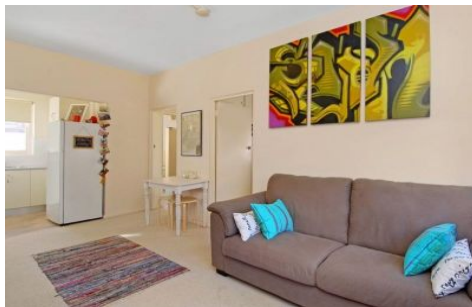


# CRE



## 39 Park Street CLOVELLY NSW

8 🏠 4 🚗

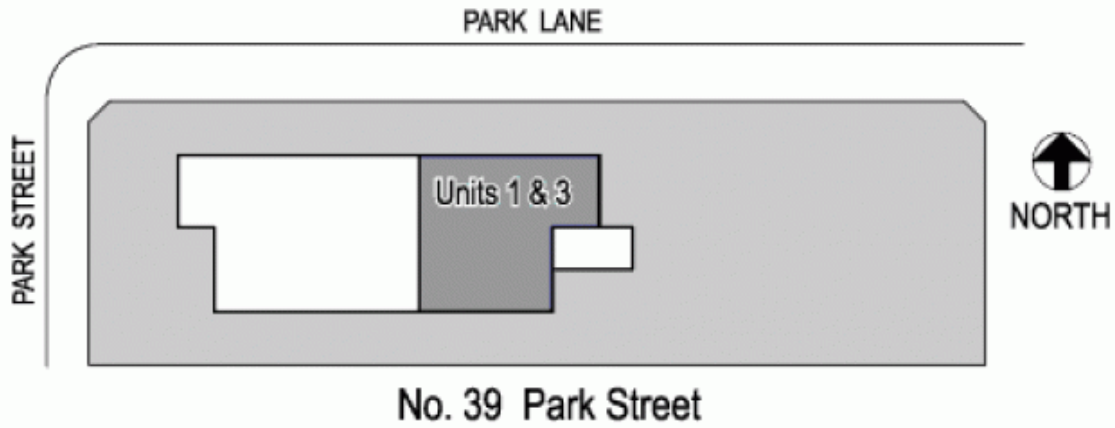
A rare investment or development opportunity, this block of four beachside apartments is offered for sale in one line. Positioned in a prime coastal setting, 250m to the sand and surf, each features two double bedrooms with the sunny upper level apartments capturing ocean views. Ideal as a self-managed super fund or savvy investment, it offers scope to add further value with a contemporary revamp and potential for off street parking (rear access via Campbell Lane).

**View :** <https://www.coogeerealestate.com.au/sale/nsw/eastern-suburbs/clovelly/residential/block-of-units/5903018>



**James Giltinan**  
02 9665 3341

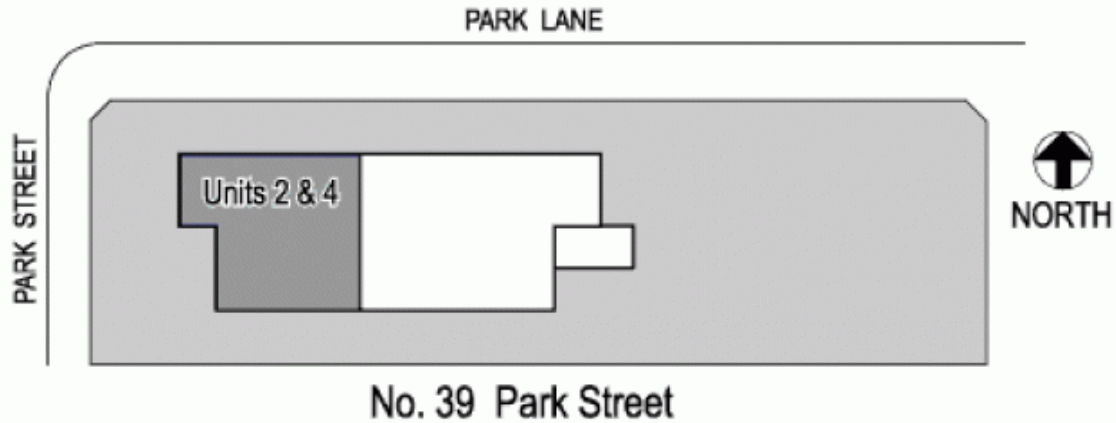
- Blue-chip investment, first time offered for sale
- Prominent corner setting, metres to ocean parkland
- One of Clovelly's most sought-after seaside enclaves
- 4 x 2 bedroom apartments with no common walls
- 441sqm site with dual access & a sunny grassed garden
- Fresh interiors with gas kitchens & tidy bathrooms
- Retain as a prime investment or develop & add value



Units 1 and 3

# Units 1 and 3 39 Park Street CLOVELLY

Plans shown are for presentation purposes only and are not part of any legal document or title and are subject to errors, omissions, inaccuracies and they should not be used as sole and/or accurate reference for purchasing decision. Interested parties should make their own enquiries using other sources supplied.



Units 2 and 4

# Units 2 and 4 39 Park Street CLOVELLY

© Dimensions shown on plans are approximate values in L x W  
Colour formulas and area coding are subject to copyright  
Illustration by Raoul Leiro 0411 28500

Plans shown are for presentation purposes only and are not part of any legal document or title and are subject to errors, omissions, inaccuracies and they should not be used as sole and/or accurate reference for purchasing decision. Interested parties should make their own enquiries using other sources supplied.