

CRE



20 Gregory Street SOUTH COOGEE NSW

3  2  2 

With its panoramic ocean views, prized parkside setting and prime 746sqm block, this freestanding coastal home offers an exceptional opportunity in one of South Coogee's most sought-after enclaves. The first time ever offered to the market, it has been lovingly held and maintained by one family for 58 years presenting an extraordinary opportunity to revamp, recreate or develop (subject to council approval). Located directly opposite Popplewell Park and featuring an idyllic child-friendly garden, it offers potential for a second level maximising the ocean views with scope to subdivide (STCA).

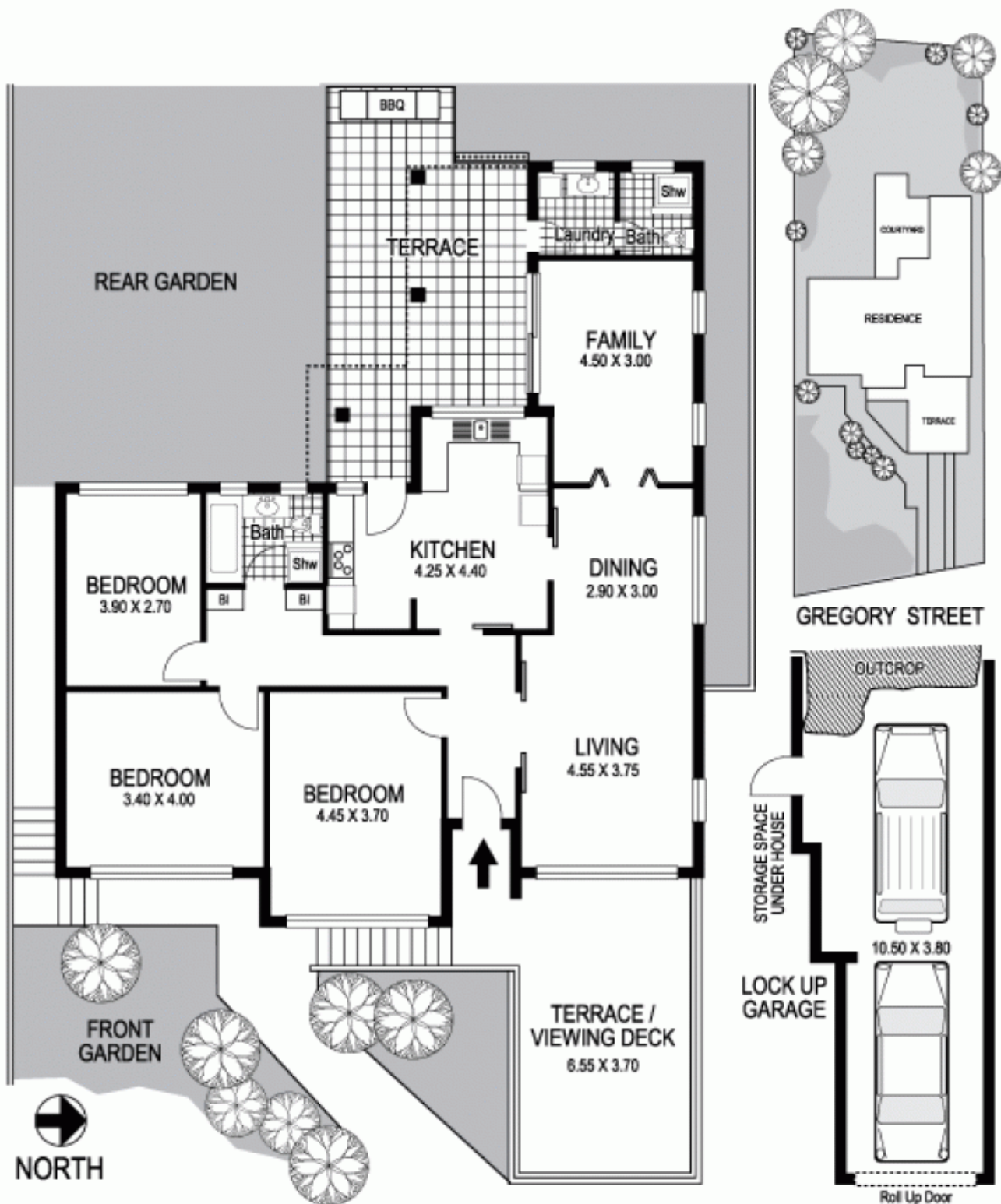
- A rare prospect on the market for the first time
- Private elevated setting with sweeping ocean views
- Open living and dining plus a family living room
- 3 double beds, electric kitchen, covered dining terrace
- Separate laundry plus an extra W.C./shower room

Land Size : 746 sqm

View : <https://www.coogeeestate.com.au/sale/nsw/eastern-suburbs/south-coogee/residential/house/5903061>



James Giltinan
02 9665 3341



20 Gregory Street SOUTH COOGEE

Plans shown are for presentation purposes only and are not part of any legal document or title and are subject to errors, omissions, inaccuracies and they should not be used as sole and/or accurate reference for purchasing decision. Interested parties should make their own enquiries using other sources supplied. Dimensions shown on the plans are approximate values in length by width. Illustration by Raoul Isidro 04111 28500.