

# CRE



**12/316-322 Clovelly Road CLOVELLY NSW**

**2  1  1 **

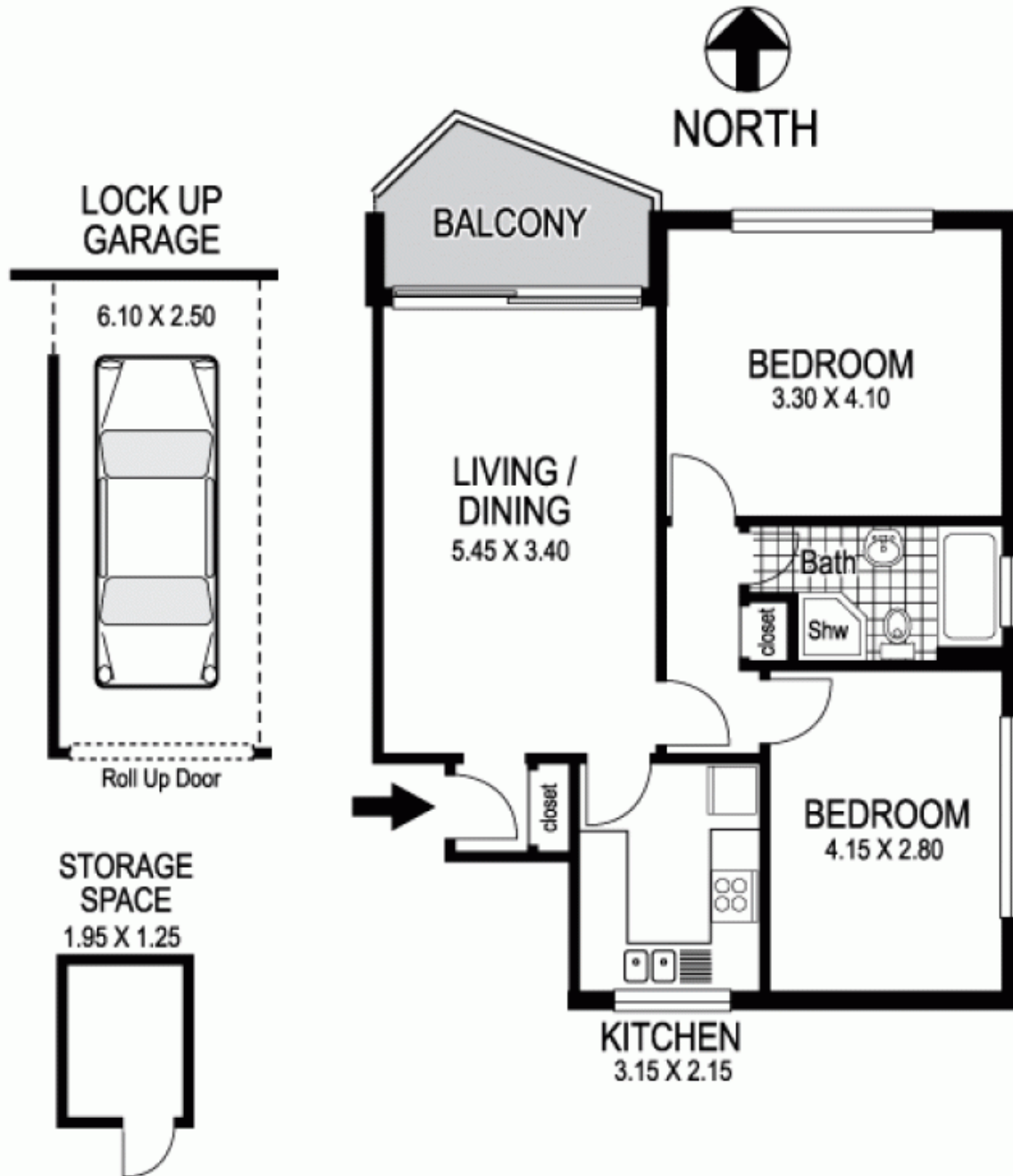
Facing north with lovely open district views to Burrows Park, this newly refreshed beachside apartment is perfectly located to enjoy a relaxed coastal lifestyle. On the front wing of Royal Surf, a fully renovated security building, its superb village setting is just one block from Clovelly Beach and the coast walk to Bondi. A great first home or investment, it features internal access to a lock-up garage and store room and is close enough to the beach and ocean pool to enjoy a morning swim every day.

- 150m stroll to the beach, cafes and coastal walk
- Sun drenched north aspect, new paint and carpet
- 2 double bedroom, sep bath & shower in bathroom
- Spacious open living, balcony with district views
- Separate modern kitchen with mosaic tile finishes
- Undercover access to garage and a store room
- Walk to Gordons Bay, transport at the doorstep

**View** : <https://www.coogeerealestate.com.au/sale/nsw/eastern-suburbs/clovelly/residential/unit/5903063>



**James Giltinan**  
**02 9665 3341**



## 12 / 316-322 Clovelly Road CLOVELLY

Plans shown are for presentation purposes only and are not part of any legal document or title and are subject to errors, omissions, inaccuracies and they should not be used as sole and/or accurate reference for purchasing decision. Interested parties should make their own enquiries using other sources supplied. Dimensions shown on the plans are approximate values in length by width. Illustration by Raoul Isidro 04111 28500.