

# CRE



## 7/38-40 Rainbow Street KINGSFORD NSW

2 1 1

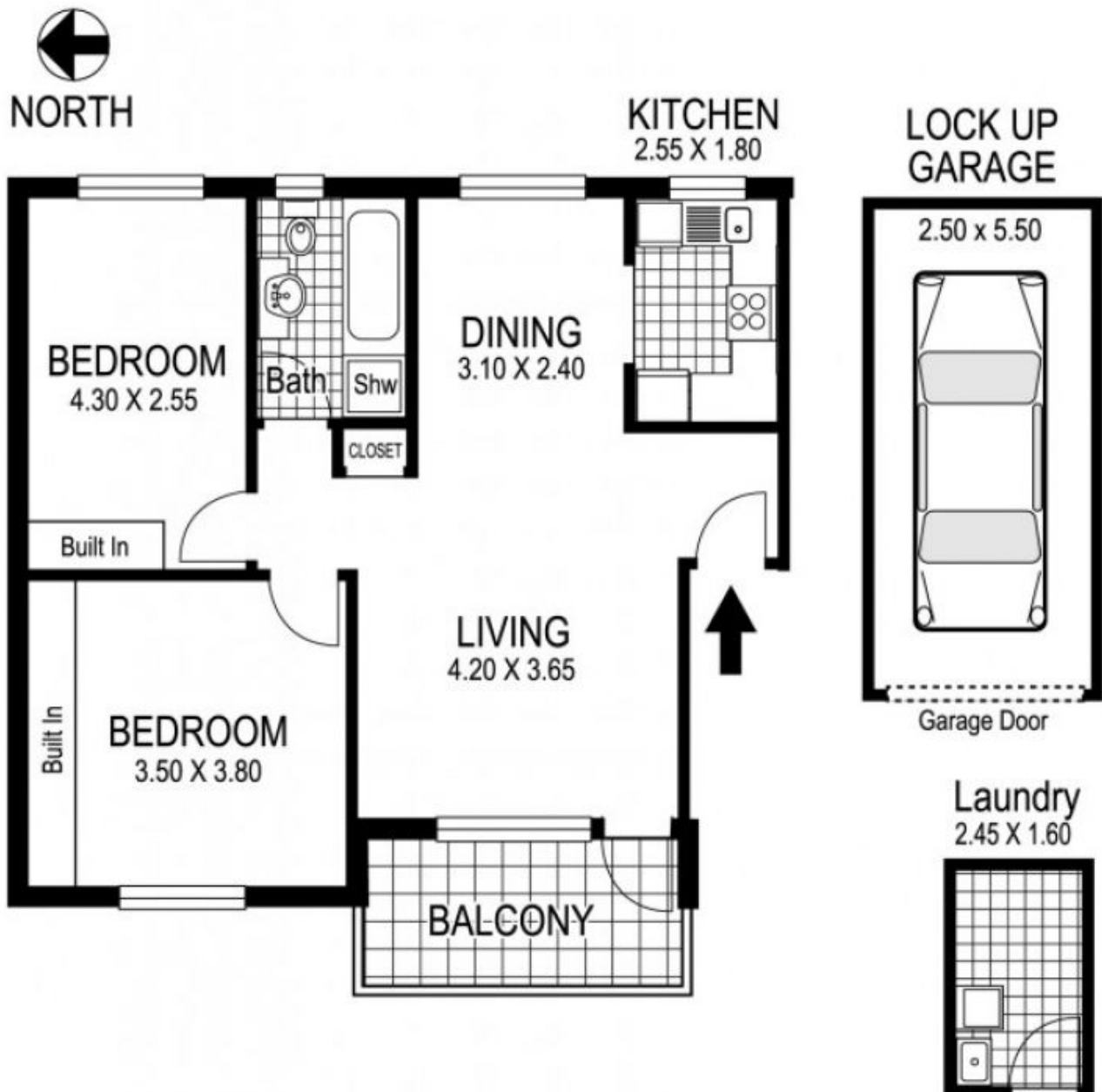
A quiet setting away from the road and bright and airy interiors make this apartment a great market entry or standout investment. Located in one of Sydney's fastest growing inner east suburbs, a short walk to UNSW and Kingsford, this two-bedroom apartment offers an ideal low-maintenance home or investment. Just 200m to Paine Reserve and with close proximity to the city and beaches, this modern security apartment offers both lifestyle appeal and strong rental demand. Set to the rear of the complex, in a secure block with an entry shared by only six, this first floor apartment features:

- Two double bedrooms; the main with wall-to-wall built-ins
- Bright open plan living/dining
- Modern kitchen
- Tidy bathroom with a bath
- Lock-up garage.

**View :** <https://www.coogee realestate.com.au/sale/nsw/eastern-suburbs/kingsford/residential/apartment/5903105>



**James Giltinan**  
02 9665 3341



**7 / 38 Rainbow Street**  
**KINGSFORD**  
*"RAINBOW COURT"*

Plans shown are for presentation purposes only and are not part of any legal document or title and are subject to errors, omissions, inaccuracies and they should not be used as sole and/or accurate reference for purchasing decision. Interested parties should make their own enquiries using other sources supplied. Dimensions shown on the plans are approximate values in length by width. Illustration by Raoul Isidro 04111 28500.