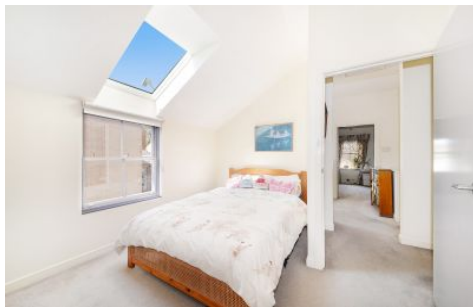


CRE



3 Argyle Crescent South Coogee NSW

4 🏠 2 🚗 2 🚗

Across from Randwick Environment Park, this freestanding home combines a wonderful sense of space, light and privacy in one of South Coogee's most desirable pockets. Set in the tightly held Moverly Green Estate, winner of the Excellence in Housing Award, the two-storey home is surrounded by parkland, nature reserves and sporting facilities making it ideal for the active family with close proximity to shopping centres, surf beaches and exceptional schools.

Building Size : 31 sqm
Land Size : 290 sqm
View : <https://www.coogeeestate.com.au/lease/nsw/eastern-suburbs/south-coogee/residential/house/5903174>

- Leafy parkside setting, tightly held by only one family
- 4 double bedrooms and a skylit study or media area
- 3 beds with b/ins on the upper level, private master suite
- Living room with Jetmaster fireplace, bright and airy dining
- Modern Smeg gas kitchen, sunny wraparound courtyard
- Internal laundry, powder room, reverse air, auto Double