

CRE



29 Keating Street Maroubra NSW

3 2

Make your mark on this spacious parkside semi and capitalise on its unusually deep block, sunny north-east aspect and sweeping unobstructed park views. Occupying a prime corner block with direct access to child-friendly Central Park, this three-bedroom semi is set on a wide street with plentiful outdoor entertaining space and potential for a second level addition & off street parking (STCA). Bathed in natural light with a fluid layout from front to back, this double-brick semi presents the ideal foundations for a contemporary transformation.

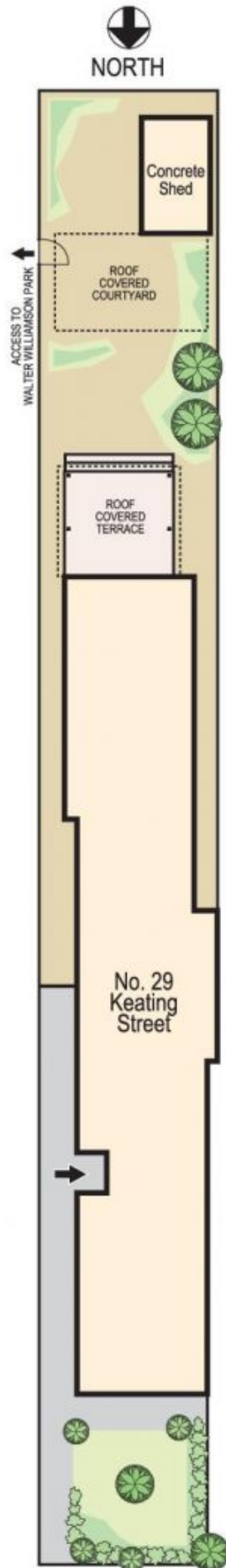
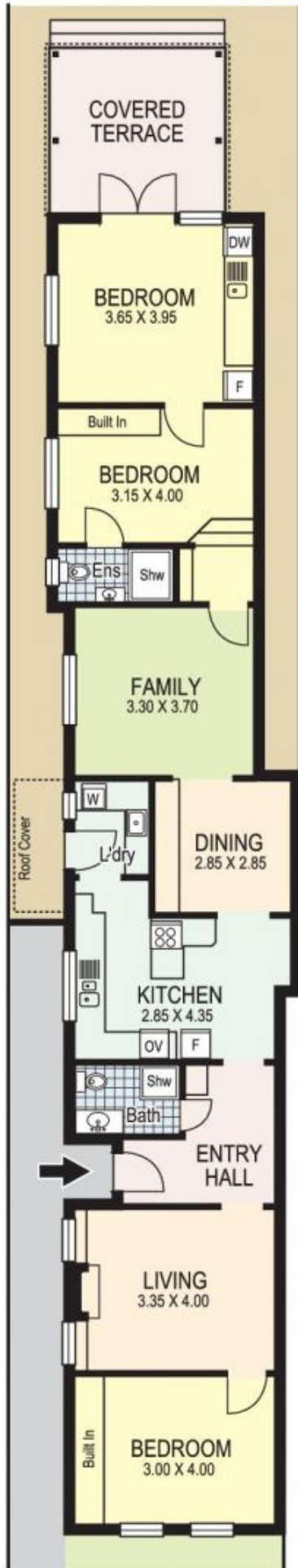
- ? A sunny NE aspect and direct park access
- ? Free-flowing layout and a deep level garden
- ? 3 bedrooms, 2 bathrooms, 2 living areas
- ? Prime canvas for creative transformation
- ? Potential for a 2nd level and parking STCA

Land Size : 291 sqm

View : <https://www.coogeerealestate.com.au/sale/nsw/eastern-suburbs/maroubra/residential/semi-detached/5903241>



James Giltinan
02 9665 3341



CRE

Plans shown are for presentation purposes only and are not part of any legal document or title and are subject to errors, omissions, inaccuracies and they should not be used as the sole and/or accurate reference for purchasing decision. Interested parties should make their own inquiries using other sources supplied. Dimensions in length and width are approximate. Illustration by Raoul Isidro 0411128500

29 Keating Street MAROUBRA