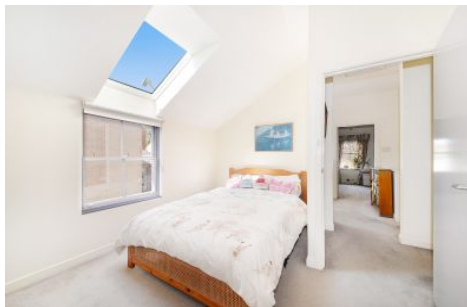


# CRE



## 3 Argyle Crescent South Coogee NSW

4 2 2

Across from Randwick Environment Park, this freestanding townhouse combines a wonderful sense of space, light and privacy in one of South Coogee's most desirable pockets. Set in the desirable Moverly Green Estate, the two-storey town house is surrounded by parkland, nature reserves and sporting facilities making it ideal for the active family with close proximity to shopping centres, surf beaches and exceptional schools.

The features included

- 4 Double Bedrooms, 3 beds have BIW on the upper level & private master
- Master bedroom has ensuite
- Skylit Study or Media Area
- Living Room has Jetmaster fireplace, bright with combined dining area

**View :** <https://www.coogeerealestate.com.au/lease/nsw/eastern-suburbs/south-coogee/residential/house/5903629>



**Alicia Ellison**  
02 9665 3341