

CRE



6/38-40 Rainbow Street Kingsford NSW

2 1 1

Natural light streams into the interiors of this newly refreshed apartment with a prized top floor setting affording sweeping elevated district views out to Botany Bay and magical sunsets. Set in the secure Rainbow Court, the impeccably presented two-bedroom apartment is just down from Paine Reserve and a short walk to Kingsford's dining hub and the light rail with close proximity to Randwick village, UNSW, Prince of Wales Hospital and The Spot. Featuring newly polished parquet floors and big windows framing the vista, this freshly schemed apartment is ready to move straight in or rent out and features an oversized lock-up garage with a laundry room and plentiful storage space.

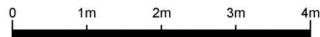
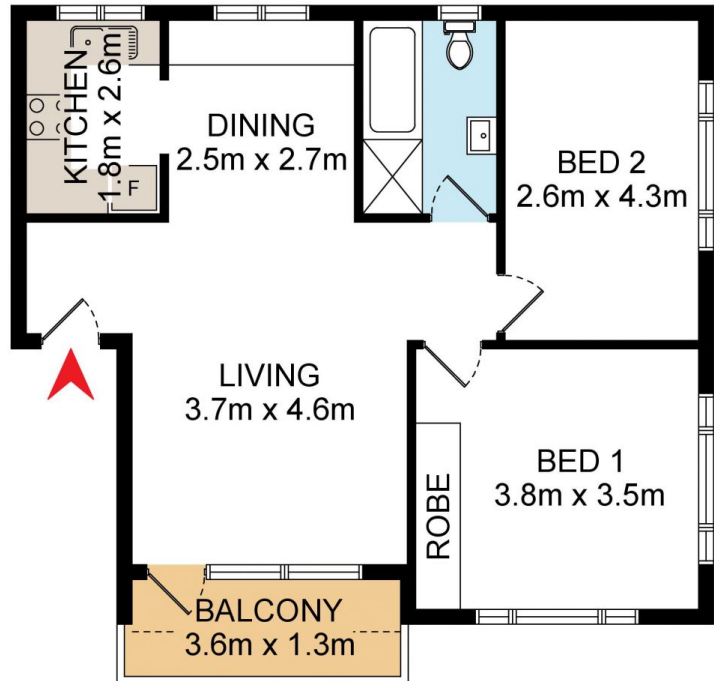
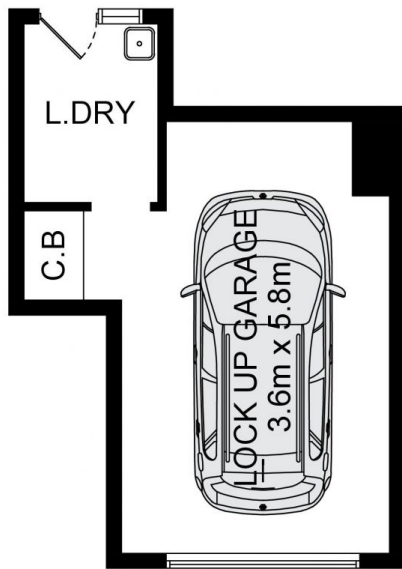
- + Fantastic location in one of the east's high-growth suburbs
- + Top floor setting in a block of 18, secure entry shared by

Price : \$ 843,000

View : <https://www.coogeerealestate.com.au/sale/nsw/eastern-suburbs/kingsford/residential/apartment/6720622>



James Giltinan
02 9665 3341



DISCLAIMER: THIS IS FOR ILLUSTRATIVE PURPOSES ONLY.
ALL DIMENSIONS ARE APPROXIMATE AND IT DOES NOT
CONSTITUTE PART OF ANY LEGAL DOCUMENTS.

6/38 Rainbow Street

Kingsford