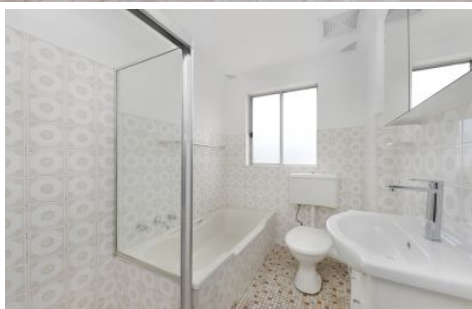


CRE



5/625 Anzac Parade Maroubra NSW

2 1 1

Newly refreshed interior and a fantastic location on the edge of Maroubra Junction's retail hub makes this light, bright and airy family friendly apartment an affordable alternative to a semi. One of nine in the secure Miramar, the first floor apartment is set back from the street in a top spot just up from Snape Park between Mount Sinai College and the International French School. Bathed in northerly sunlight and opening to an 8m wide enclosed balcony, the two-bedroom apartment features a lock-up garage on title and is ready to move straight in or rent out with potential to add your stamp of style. With express transport to the city and beach at the doorstep, it's 600m to the shopping hub with close proximity to UNSW and Randwick's hospital precinct.

View : <https://www.coogeerealestate.com.au/sale/nsw/eastern-suburbs/maroubra/residential/apartment/6742712>



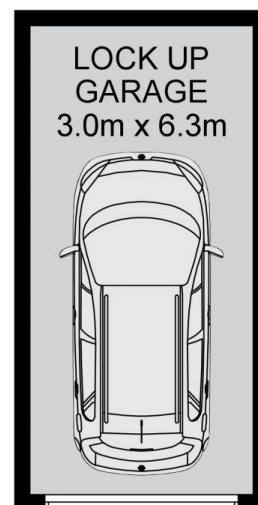
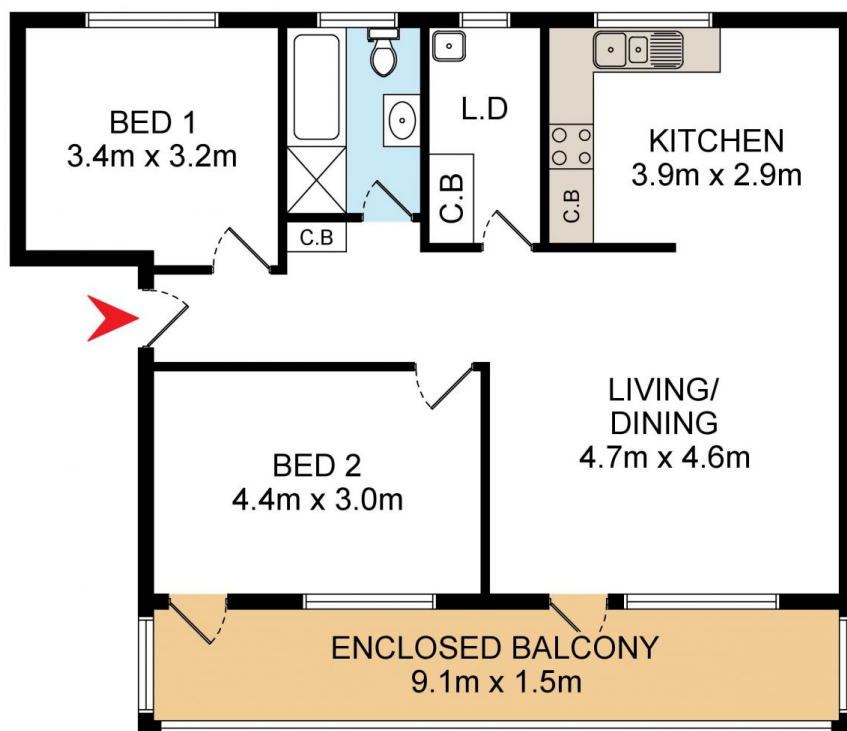
James Giltinan
02 9665 3341



Donna Burke
02 9665 3341

- + Double brick block of 9, secure entry shared by 6
- + Newly refurbished interiors and a sunny northerly aspect

<https://www.coogeerealestate.com.au>



DISCLAIMER: THIS IS FOR ILLUSTRATIVE PURPOSES ONLY.
ALL DIMENSIONS ARE APPROXIMATE AND IT DOES NOT
CONSTITUTE PART OF ANY LEGAL DOCUMENTS.

5/625 Anzac Parade

Maroubra