

CRE



6/55 Bream Street Coogee NSW

1 1

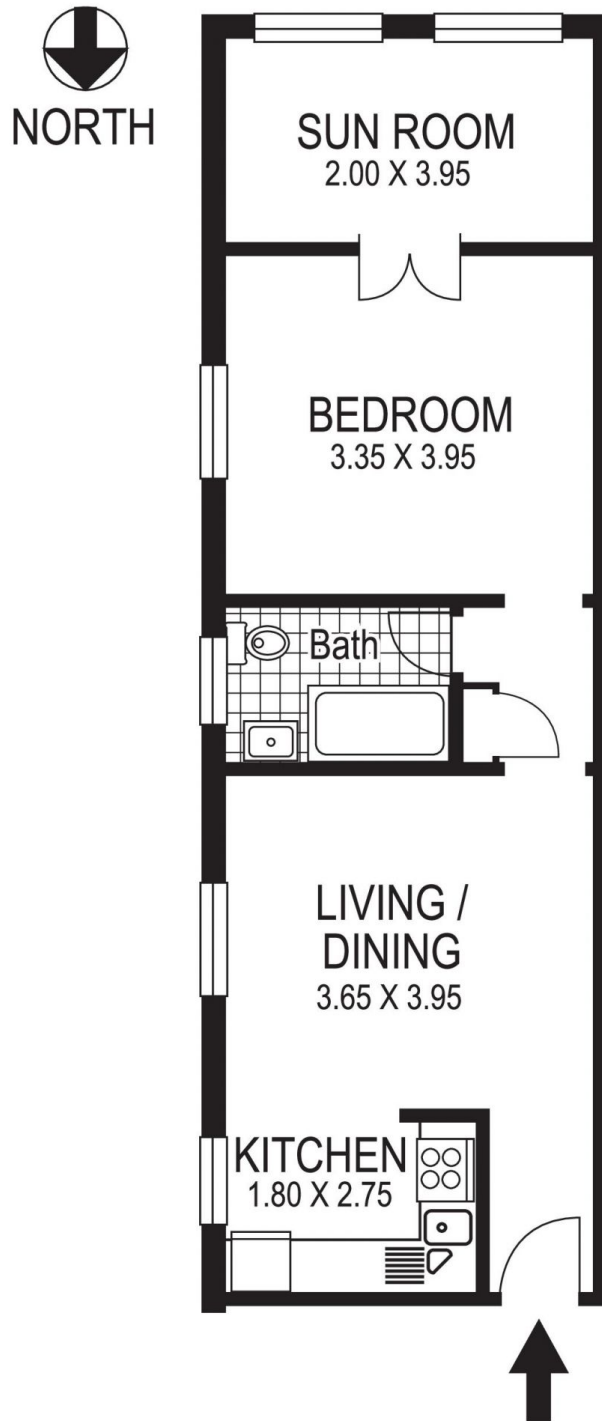
Superbly proportioned for a one-bedroom apartment, this boutique seaside home offers a welcoming blend of classic Art Deco charm and fresh modern interiors. On the top floor of Apsley House, a beautifully maintained block of eight, it features a large bedroom and a sunroom with high ornate ceilings, elegant oversized windows and a leafy outlook enhancing the sense of space. Set on one of Coogee's best streets leading down to the sand and surf, this charming beachside apartment is a stone's throw to Bardon Park and a level 600m walk to Coogee Pavilion.

Freshly schemed interiors feature an open layout with bright and airy living/dining space, a modern kitchen with tumbled marble finishes, a double bedroom and large sunroom ideal as a study or nursery and original Art Deco leadlight windows and picture rails. A lovely shared garden with lush lawn and a sunny north aspect also features a

Building Size : 51 sqm
View : <https://www.coogeeestate.com.au/lease/nsw/eastern-suburbs/coogee/residential/apartment/7537121>



Madison Watt
02 9665 3341



6 / 55 Bream Street
COOGEE
"APSLEY COURT"

Plans shown are for presentation purposes only and are not part of any legal document or title and are subject to errors, omissions, inaccuracies and they should not be used as sole and/or accurate reference for purchasing decision. Interested parties should make their own enquiries using other sources supplied. Dimensions shown on the plans are approximate values in length by width. Illustration by Raoul Isidro 04111 28500.