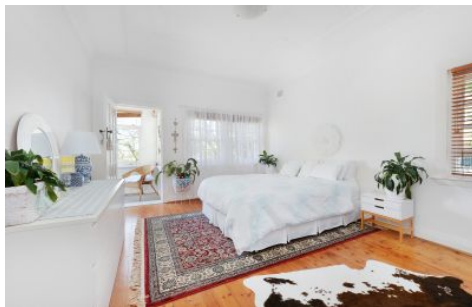


# CRE



## 14/89 Mount Street Coogee NSW

2 1

Salty sea vibes, beautiful proportions and a tranquil garden outlook make for breezy beachside living in this character-filled apartment. Holding a prized setting in the Art Deco rear wing of a grand converted manor residence, the bright and airy apartment's lush leafy outlook underscores a sense of peace and privacy while its fantastic location around the corner from Coogee Bay Road's eat street and cafe hub is just 550m to the beach. Facing east and so close to the ocean that you can feel the salt in the air, the 77sqm approx apartment's flexible layout and original period features make a perfect beach pad in a community minded garden complex. Available for the first time in 25 years, this is a superb opportunity to add your stamp of style and immerse yourself in Coogee's laidback lifestyle.

**Price** : \$ 1,100,000

**View** : <https://www.coogeerealestate.com.au/sale/nsw/eastern-suburbs/coogee/residential/apartment/7751527>



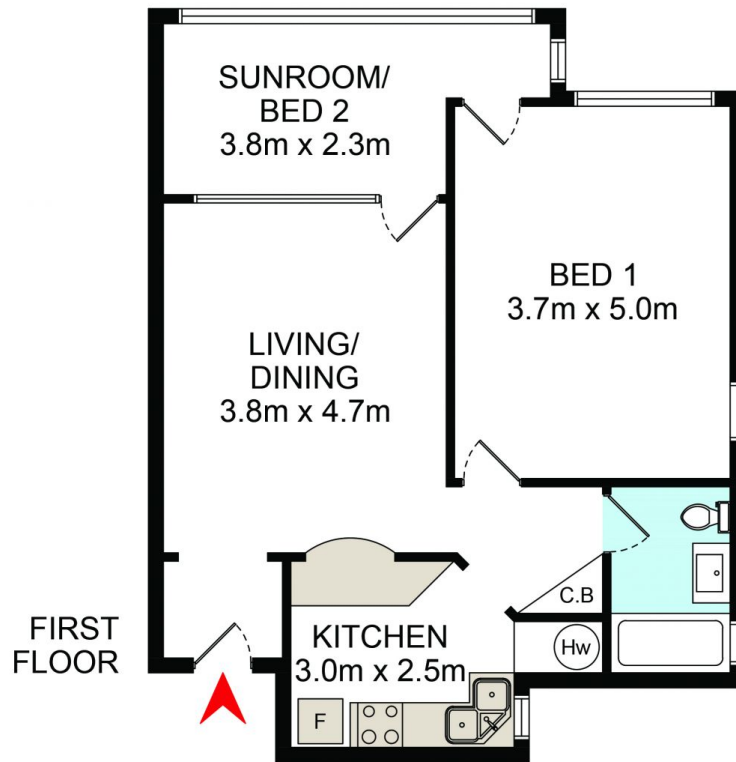
**Donna Burke**  
02 9665 3341



**James Giltinan**  
02 9665 3341

+ A gorgeous garden setting, leafy greenery all around

<https://www.coogeerealestate.com.au>



0 1m 2m 3m 4m

DISCLAIMER: THIS IS FOR ILLUSTRATIVE PURPOSES ONLY.  
ALL DIMENSIONS ARE APPROXIMATE AND IT DOES NOT  
CONSTITUTE PART OF ANY LEGAL DOCUMENTS.

14/89 Mount Street

Coogee