

CRE



1/20 Abbott Street Coogee NSW

2 1 1

Tucked away in a tree-lined street on the edge of Bardon Park, this apartment is positioned on the ground floor of a well-maintained block of 15. Presented in great condition it offers a fabulous lifestyle purchase setting close to the beachfront, marine parkland and the coastal walk. Easy level access adds to the appeal of this well-positioned Coogee apartment.

View : <https://www.coogeeestate.com.au/sale/nsw/eastern-suburbs/coogee/residential/unit/7766991>

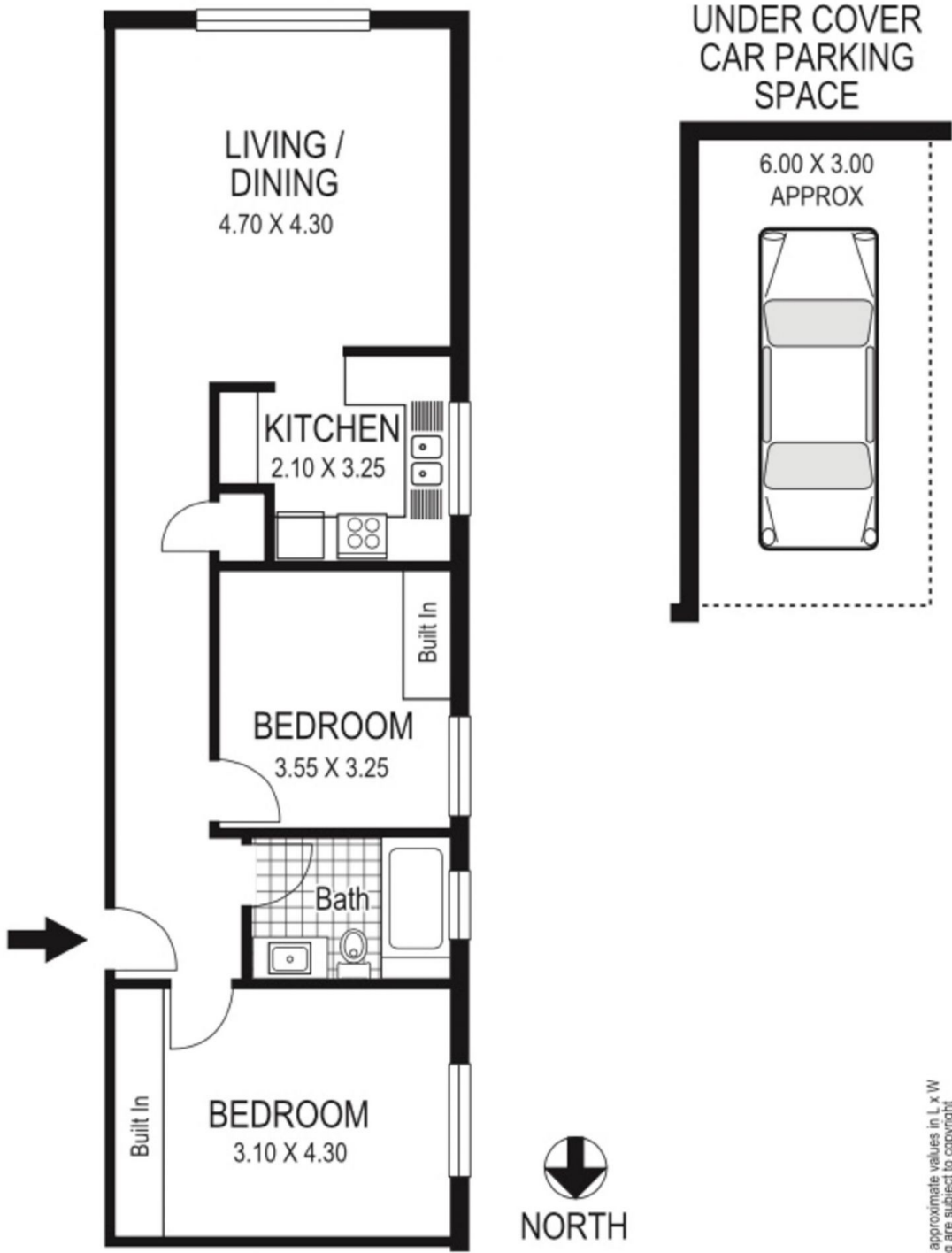
- ? Fabulous lifestyle setting close to park, beachfront & transport
- ? Easy access to shops, cafes and Sydney CBD
- ? 2 double bedrooms with built-ins, large master bed
- ? Open living/dining area
- ? Neat kitchen and fresh bathroom
- ? Well-maintained block of 15, only one common wall
- ? Share laundry with room for own machines
- ? Undercover parking on title



James Giltinan
02 9665 3341



Donna Burke
02 9665 3341



1 / 20 Abbott Street COOGEE

Plans shown are for presentation purposes only and are not part of any legal document or title and are subject to errors, omissions, inaccuracies and they should not be used as sole and/or accurate reference for purchasing decision. Interested parties should make their own enquiries using other sources supplied.

© Dimensions shown on plans are approximate values in L x W
Colour formulas and area coding are subject to copyright
Illustration by Raoul Isidro 04111 28500