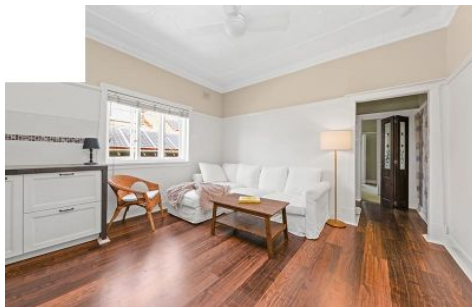


CRE



6/55 Bream Street Coogee NSW

1 1

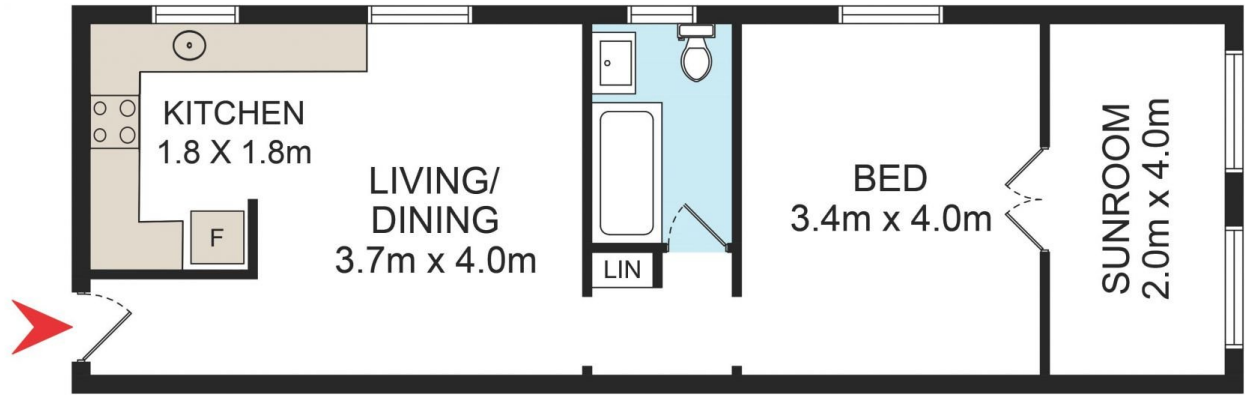
Superbly proportioned for a one-bedroom apartment, this boutique seaside home offers a welcoming blend of classic Art Deco charm and fresh modern interiors. On the top floor of Apsley House, a beautifully maintained block of eight, it features a large bedroom and a sunroom with high ornate ceilings, elegant oversized windows and a leafy outlook enhancing the sense of space. Set on one of Coogee's best streets leading down to the sand and surf, this charming beachside apartment is a stone's throw to Bardon Park and 600m walk to Coogee Pavilion.

Price : For Sale \$950,000
Building Size : 51 sqm
View : <https://www.coogeeestate.com.au/sale/nsw/eastern-suburbs/coogee/residential/apartment/7934514>

- ? Beautifully maintained block of 8 with terrazzo entry
- ? Freshly schemed interiors, bright open living/dining
- ? Modern kitchen featuring tumbled marble finishes
- ? Double bed and large sunroom or study/nursery
- ? Fresh white bathroom, linen press, picture rails



James Giltinan
02 9665 3341



DISCLAIMER: THIS IS FOR ILLUSTRATIVE PURPOSES ONLY.
ALL DIMENSIONS ARE APPROXIMATE AND IT DOES NOT
CONSTITUTE PART OF ANY LEGAL DOCUMENTS.

6/55 Bream Street

Coogee